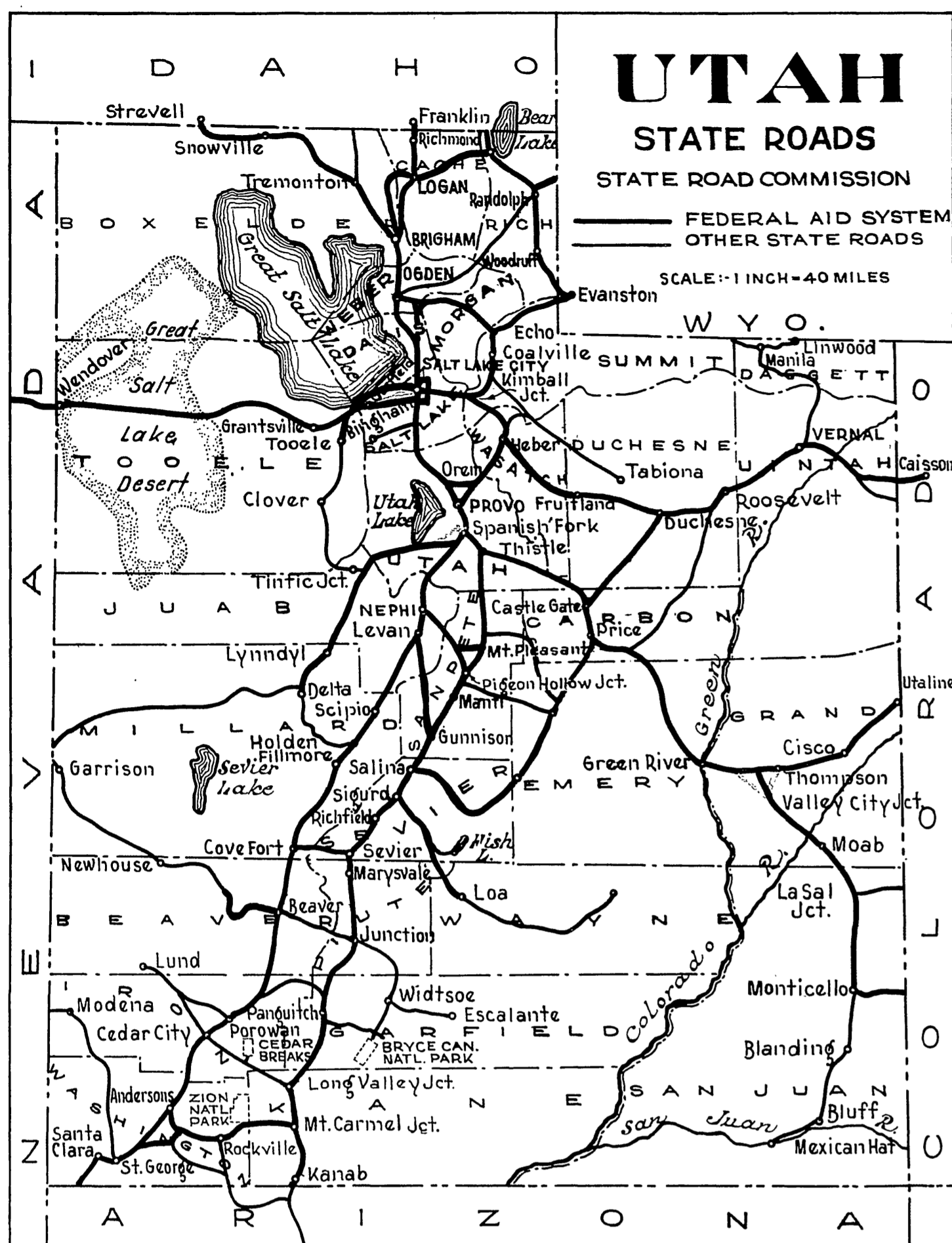


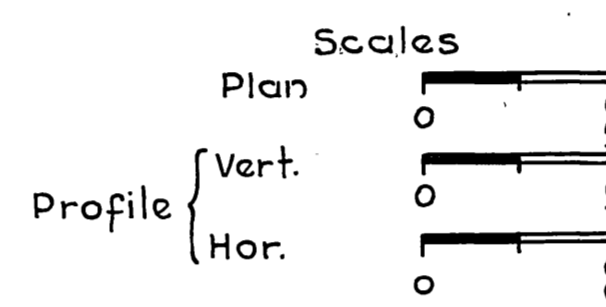
FED. ROAD DIST. NO.	STATE	W.P.S.O. PROJ. NO.	FISCAL YEAR	SHEET NO.	TOTAL SHEETS
12	UTAH	193-A	1936	1	19
"	"	W.P.M.S. 193-B	"	"	"
"	"	193-A (2)	1940	1	3



# STATE OF UTAH STATE ROAD COMMISSION

## PLANS OF PROPOSED STATE ROAD

**EDEN - HUNTSVILLE**  
 U. S. W. P. H. P. No. W. P. S. O. 193-A LENGTH 3.992 MILES  
 U. S. W. P. H. P. No. W. P. M. S. 193-B LENGTH 0.062 MILES  
 F. A. S. P. No. F. A. S. 193-A (2) LENGTH 3.992 MILES

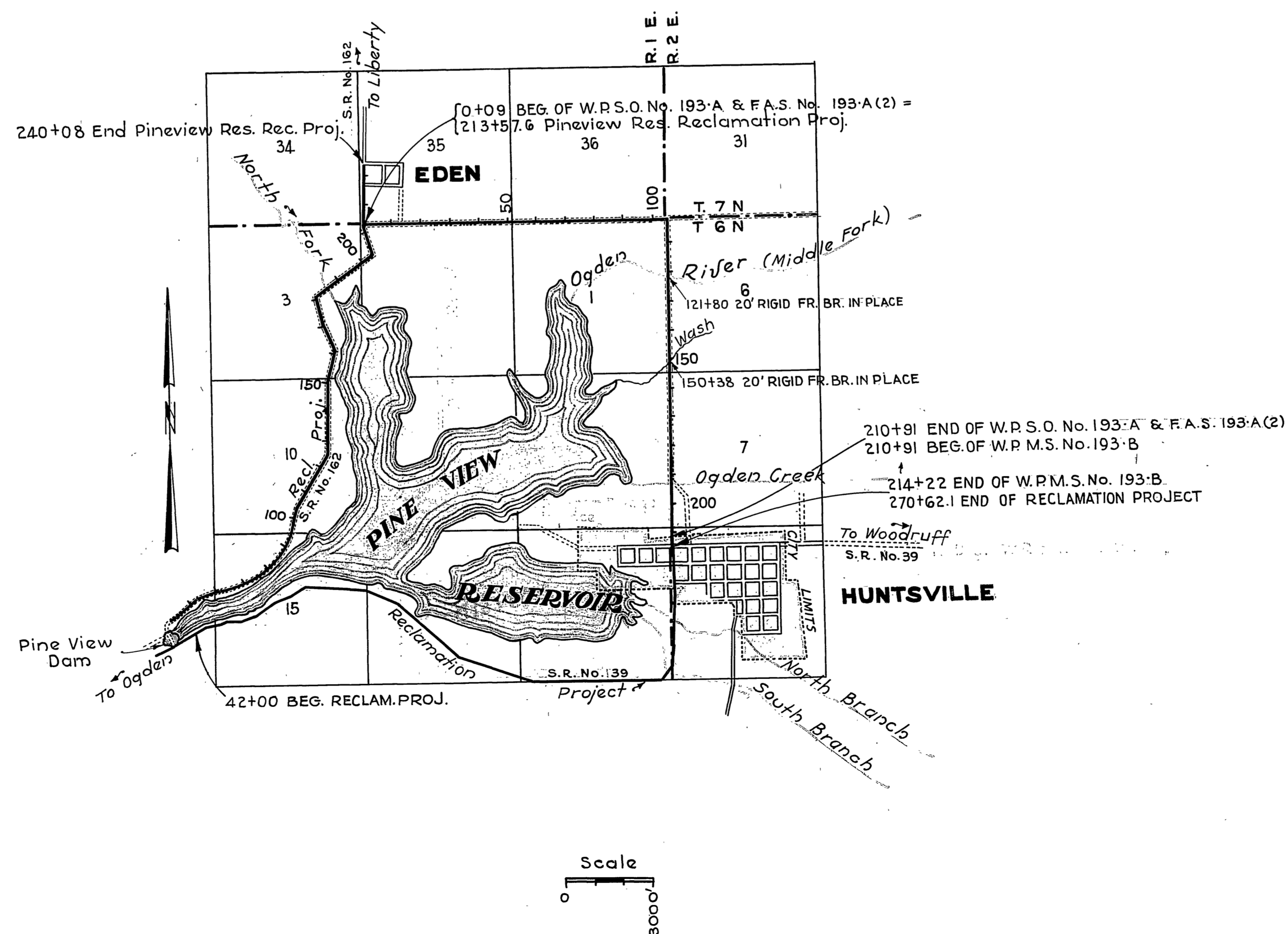


### W. P. M. S. No. 193-B INDEX TO SHEETS W. P. S. O. No. 193-A

SHEET No.	DESCRIPTION	DRAWING No.	STATION
1	Title Sheet		
2	Typical Section		
3-9	Plan and Profile		
10	Extension to 5'x3'x17' Con. Box	E-535	3+83
11	6'x6'x36' Conc. Box	SC-600-L17	50+93
12	24" C.M.P. Syphon Soldered Joints	E-344-L47	55+03
13	Extension to 10'x5'x18' Conc. Box	E-237-L234	68+16
	" 9'x4'x19' " " "	" " " " L-2456	71+60
14	8'x4'x28'2" Conc. Box	SC-800-L9	114+
15	20'x5'x26'4" Rigid Frame Br.	201190-1	121+80
16	20'x4'x26'4" " " "	201090-2	150+38
17	6'x5'x42'10'3/4" Conc. Box 45°XL	6545-1	198+19
18-A	Widen & Super-elevate Curves	J-343-R	
18-B	F.A.P. & R. of W. Mkrs.	J-391-R	
19	18'x80' C.M.P. Syphon	E-344-L22	159+65
1-15	X-Sections		

### INDEX TO SHEETS F.A.S.P. No. 193-A (2)

SHEET	DESCRIPTION	DWG.	STA.
1	Title Sheet		
2	Typical Section		
3	Super. & Widen Curves	J-343-R	



APPROVED... JAN. 1936

STATE ROAD COMMISSION OF UTAH

*Edw. E. Howe*  
CHAIRMAN  
*Frederick R. Stearns*  
MEMBER

*Chas. H. ...*  
MEMBER  
 CHIEF ENGINEER

RECOMMENDED FOR APPROVAL

DIST. ENGINEER BUREAU PUBLIC ROADS  
 RECOMMEND FOR APPROVAL

CHIEF ENGINEER, BUREAU PUBLIC ROADS

APPROVED

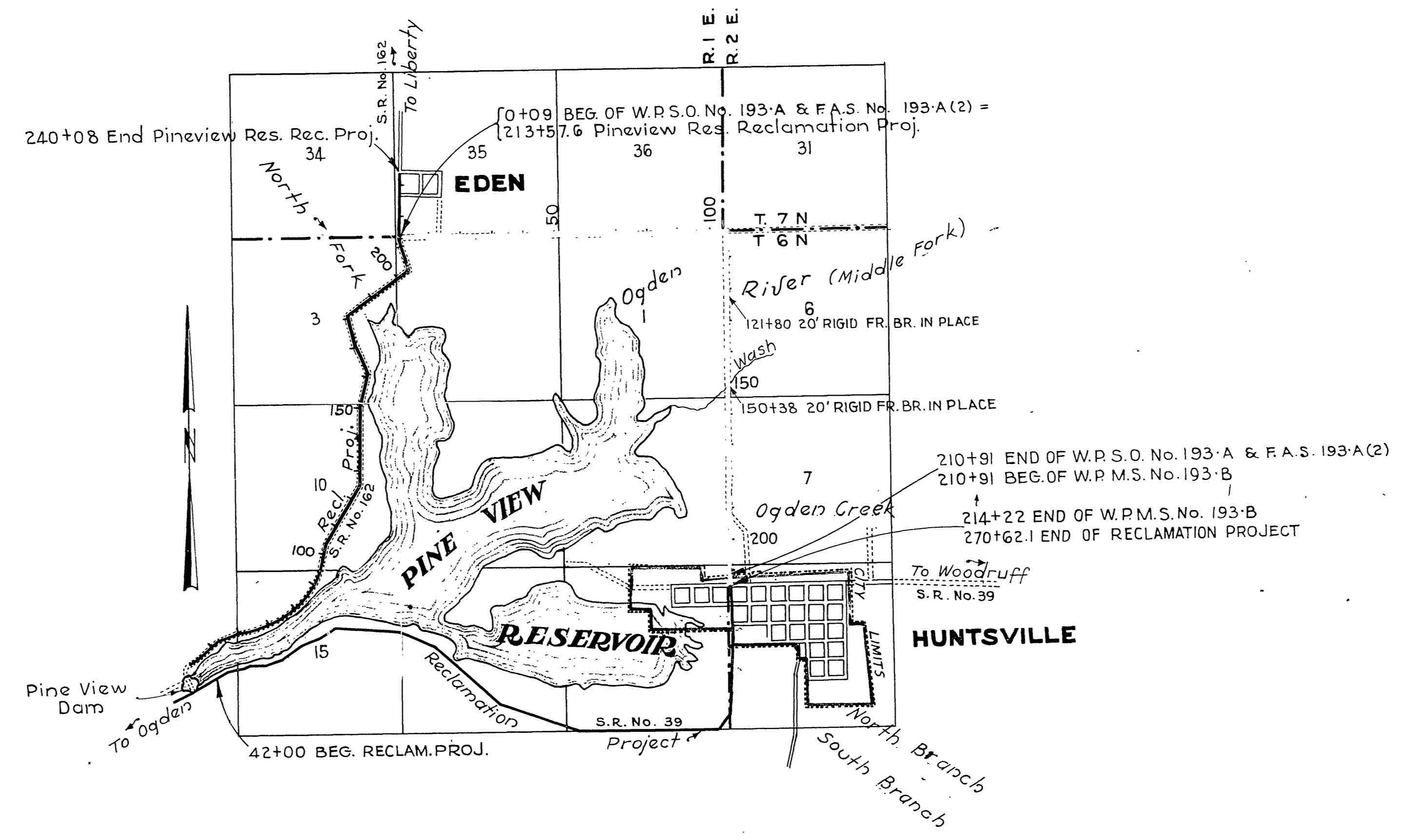
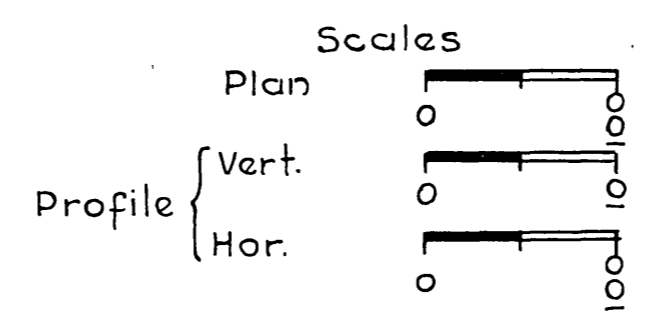
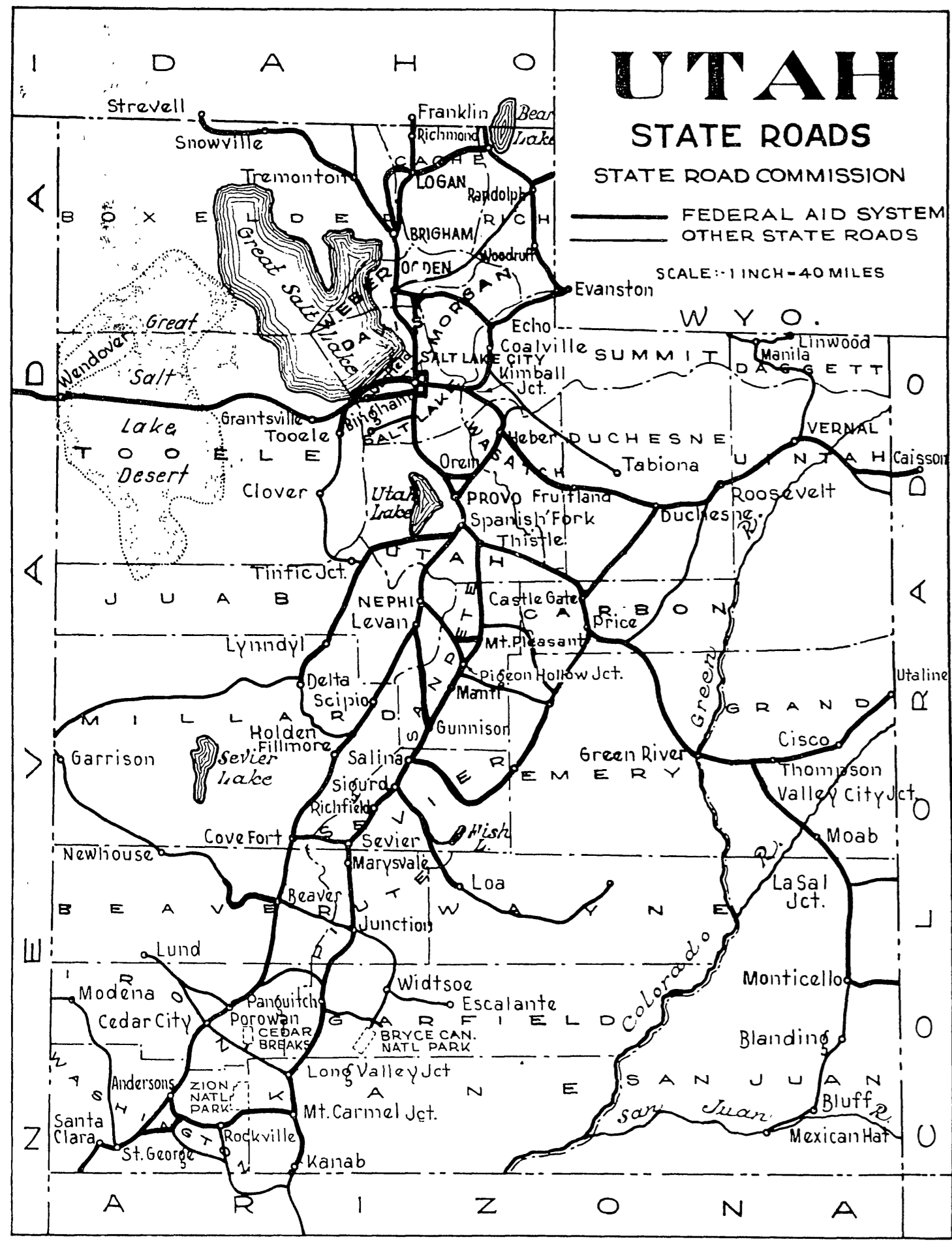
DIRECTOR BUREAU PUBLIC ROADS

FED. ROAD DIST. NO.	STATE	W.P.S.O. PROJ. NO.	FISCAL YEAR	SHEET NO.	TOTAL SHEETS
12	UTAH	193-A	1936	1	19
"	"	193-B	"	"	"
"	"	193-A (2)	1940	1	3

# STATE OF UTAH STATE ROAD COMMISSION

## PLANS OF PROPOSED STATE ROAD

**EDEN - HUNTSVILLE**  
 U. S. W. P. H. P. No. W. P. S. O. 193-A LENGTH 3.992 MILES  
 U. S. W. P. H. P. No. W. P. M. S. 193-B LENGTH 0.062 MILES  
 F. A. S. P. No. F. A. S. 193-A (2) LENGTH 3.992 MILES



### W. P. M. S. No. 193-B INDEX TO SHEETS W. P. S. O. No. 193-A

SHEET No.	DESCRIPTION	DRAWING No.	STATION
1	Title Sheet		
2	Typical Section		
3-9	Plan and Profile		
10	Extension to 5'x3'x17' Con. Box	E-535	3+83
11	6'x6'x36' Conc. Box	SC 600-L17	50+93
12	24" C.M.P. Syphon Soldered Joints	E-344-L17	55+03
13	Extension to 10'x5'x18' Conc. Br.	E-2326-L234	68+16
	" 9'x4'x19' " "	"-L2456	71+60
14	8'x4'x28'2" Conc. Box	SC 800 L9	114+
15	20'x5'x26'4" Rigid Frame Br.	201190-1	121+80
16	20'x4'x26'4" " "	201090-2	150+38
17	6'x5'x42'10'3/4" Conc. Box 45'xL	J-343-R	654.5-1
18-A	Widen & Super-elevate Curves	J-343-R	
18-B	F.A.P. & R. of W. Mkrs.	J-391-R	
19	18'x90' C.M.P. Syphon	E-344-L22	159+65
1-15	X-Sections		

### INDEX TO SHEETS F.A.S.P. No. 193-A (2)

SHEET	DESCRIPTION	DWG.	STA.
1	Title Sheet		
2	Typical Section		
3	Super. & Widen Curves	J-343-R	

APPROVED... JAN., 1936  
STATE ROAD COMMISSION OF UTAH

*Eduw E. Howe*  
CHAIRMAN

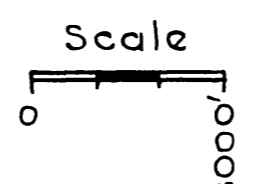
*Anderson Klesby*  
MEMBER

*Kelley*  
MEMBER

RECOMMENDED FOR APPROVAL  
DIST. ENGINEER BUREAU PUBLIC ROADS

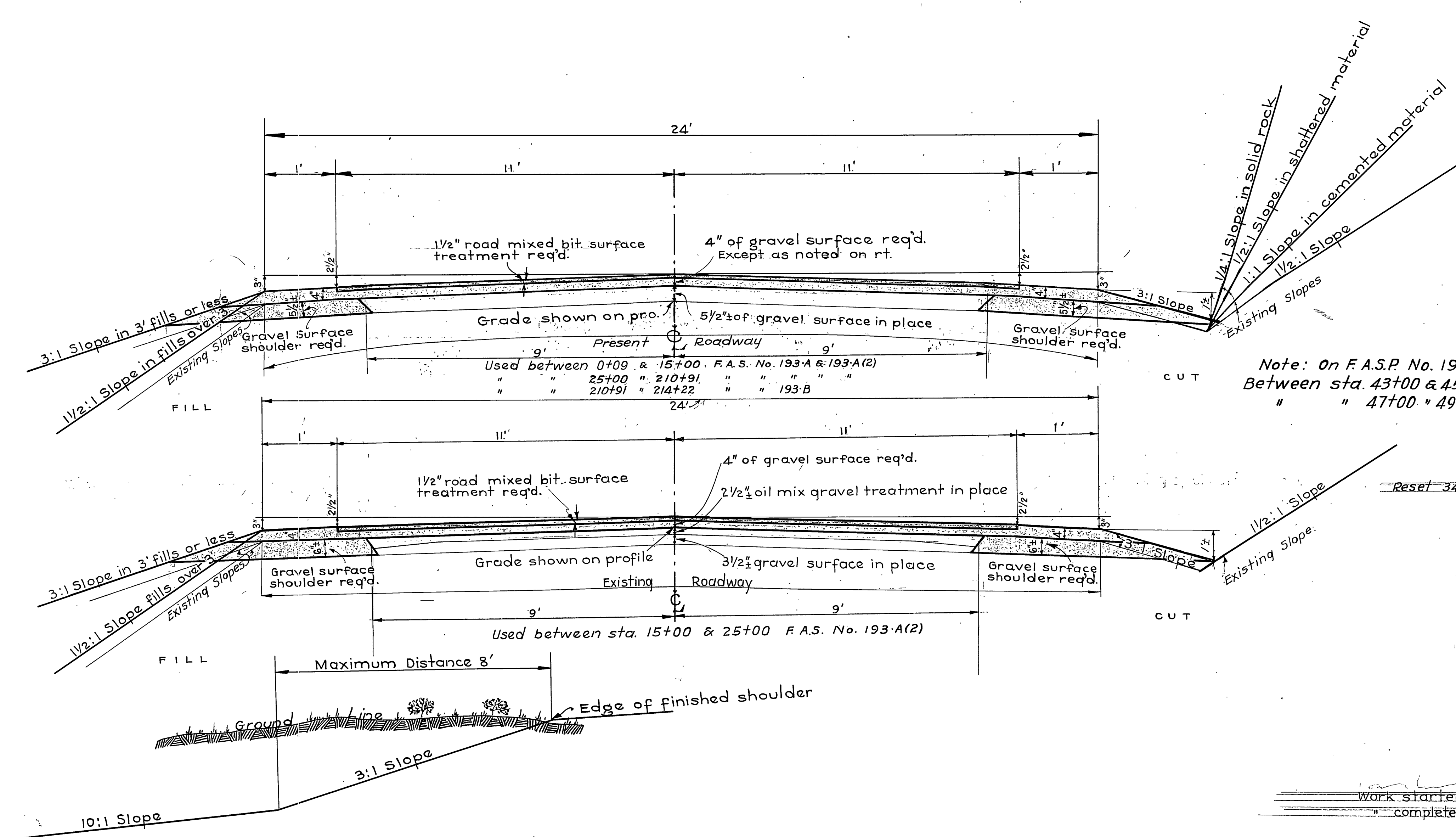
RECOMMEND FOR APPROVAL  
CHIEF ENGINEER BUREAU PUBLIC ROADS

APPROVED  
DIRECTOR BUREAU PUBLIC ROADS



# TYPICAL CROSS SECTION

FED. ROAD DIST. NO.	STATE	W.P.S.O. PROJ. NO.	FISCAL YEAR	SHEET NO.	TOTAL SHEETS
12	UTAH	193-A	1936	2	
"	"	W.P.S.O. 193-B	"	"	
"	"	193-A(2)	1940	2	3



Note: On F.A.S.P. No. 193-A(2)  
 Between sta. 43+00 & 45+00 3' gravel surface req'd.  
 " " 47+00 " 49+00 3' " "  
 (Place in 3 courses)

Reset 34 guide posts (existing) as directed by engineer

Work started on F.A.S. 193-A(2) 7-28-39  
 completed " " " " 10-3-39

Widen and superelevate curves according to J-343-R

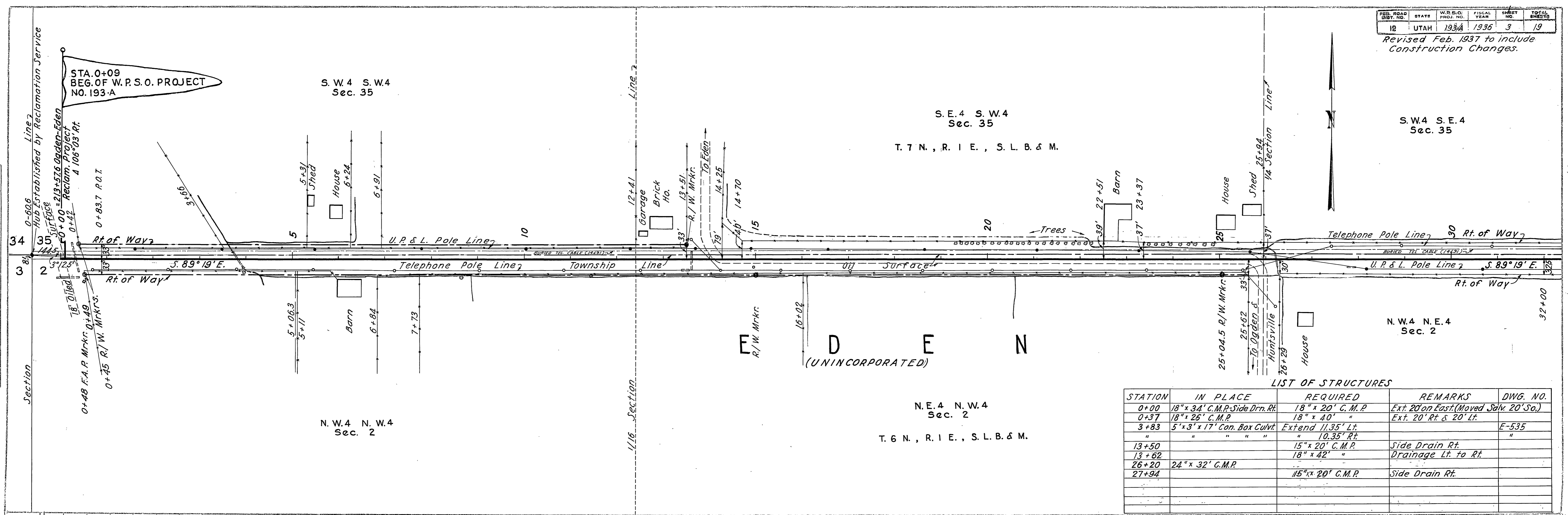
Revised for oil 5-20-39

UTAH STATE ROAD COMMISSION  
 SALT LAKE CITY - UTAH  
 E.C. KNOWLTON - CHIEF ENGINEER

24' ROADWAY  
 1 1/2" X 22" ROAD MIXED BIT SURFACE TREATMENT.

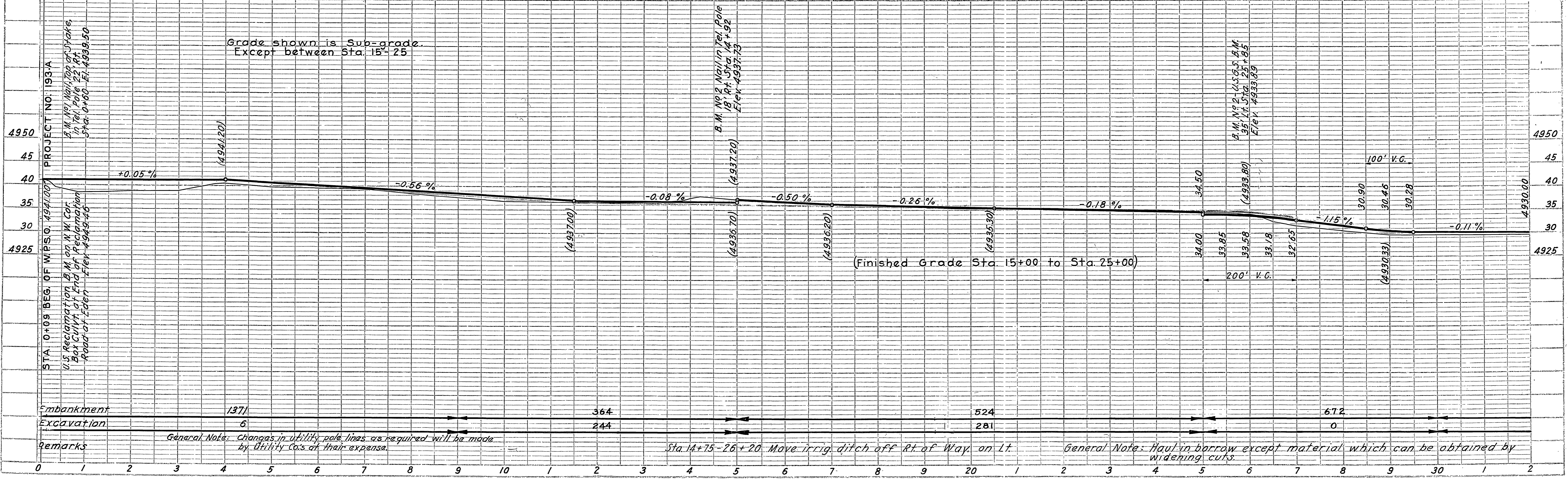
DESIGNED BY \_\_\_\_\_ SCALE \_\_\_\_\_  
 DRAWN BY \_\_\_\_\_ ISSUED \_\_\_\_\_  
 CHECKED BY \_\_\_\_\_ APPROVED \_\_\_\_\_  
 EXAMINED BY \_\_\_\_\_

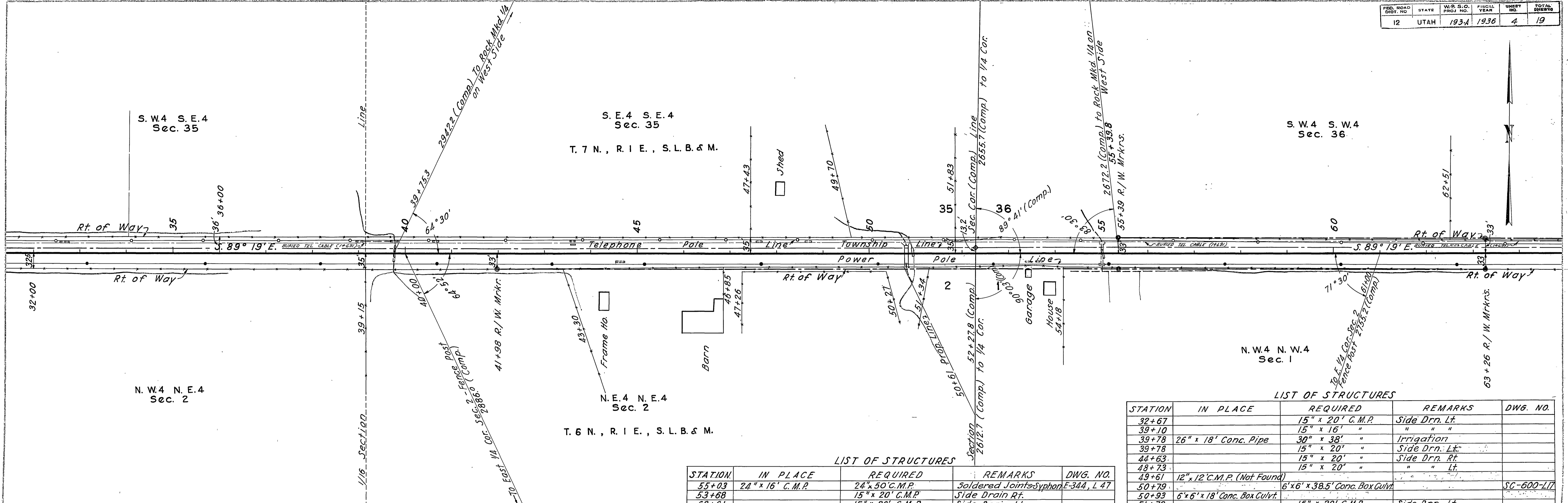
TYPE \_\_\_\_\_



**LIST OF STRUCTURES**

STATION	IN PLACE	REQUIRED	REMARKS	DWG. NO.
0+00	18" x 34' C.M.P. Side Drn. Rt.	18" x 20' C.M.P.	Ext. 20' on East. (Moved Salv. 20' So.)	
0+37	18" x 26' C.M.P.	18" x 40'	Ext. 20' Rt. & 20' Lt.	
3+83	5' x 3' x 17' Con. Box Culvert	Extend 11.35' Lt.		E-535
"	" " " "	" 10.35' Rt.		"
13+50		15" x 20' C.M.P.	Side Drain Rt.	
13+62		18" x 42' "	Drainage Lt. to Rt.	
26+20	24" x 32' C.M.P.			
27+94		15" x 20' C.M.P.	Side Drain Rt.	



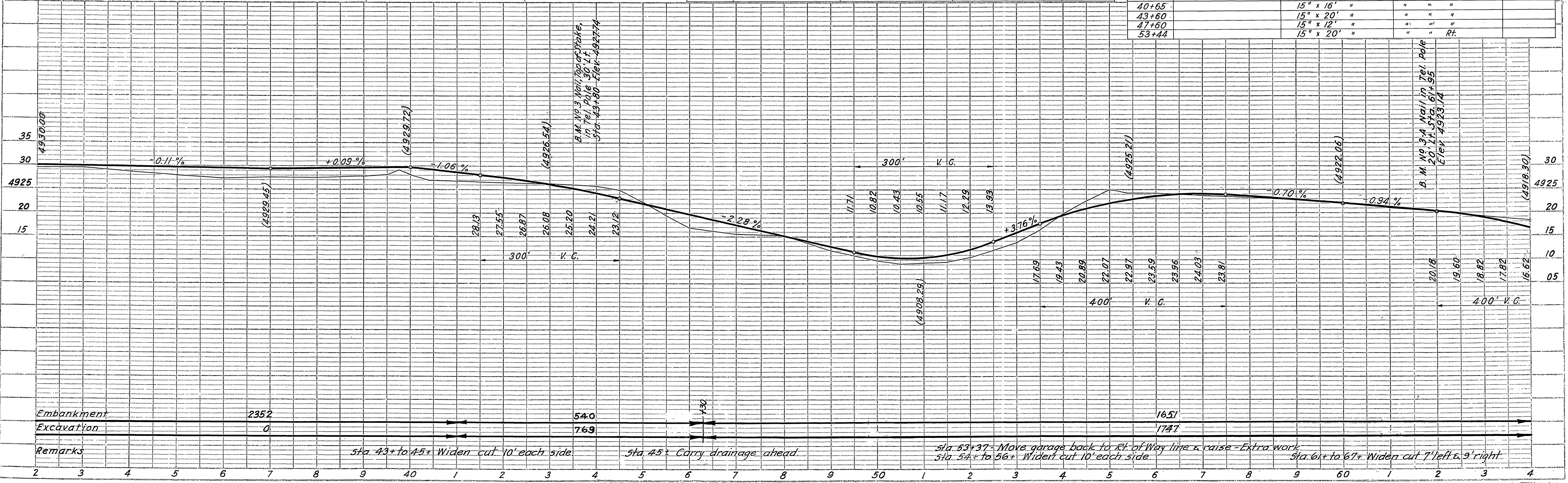


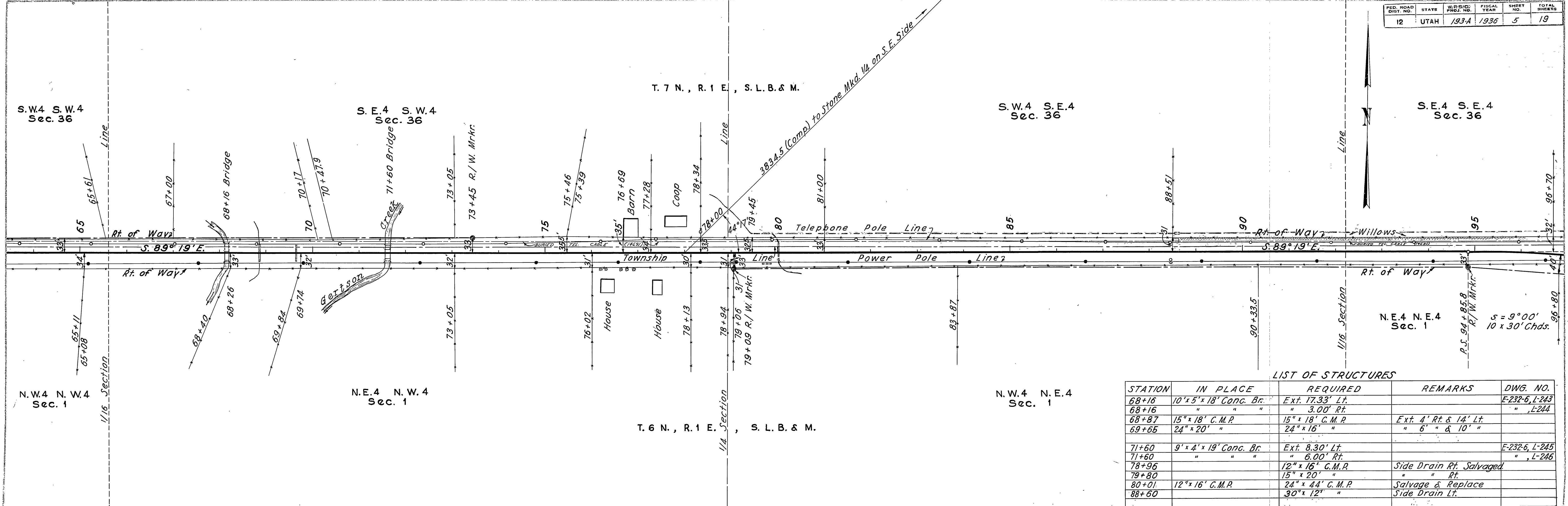
**LIST OF STRUCTURES**

STATION	IN PLACE	REQUIRED	REMARKS	DWG. NO.
55+03	24" x 16' C.M.P.	24" x 50' C.M.P.	Soldered Joints-Syphon	E-344, L 47
53+68		15" x 20' C.M.P.	Side Drain Rt.	
62+61		15" x 20' C.M.P.	Side Drain Lt.	

**LIST OF STRUCTURES**

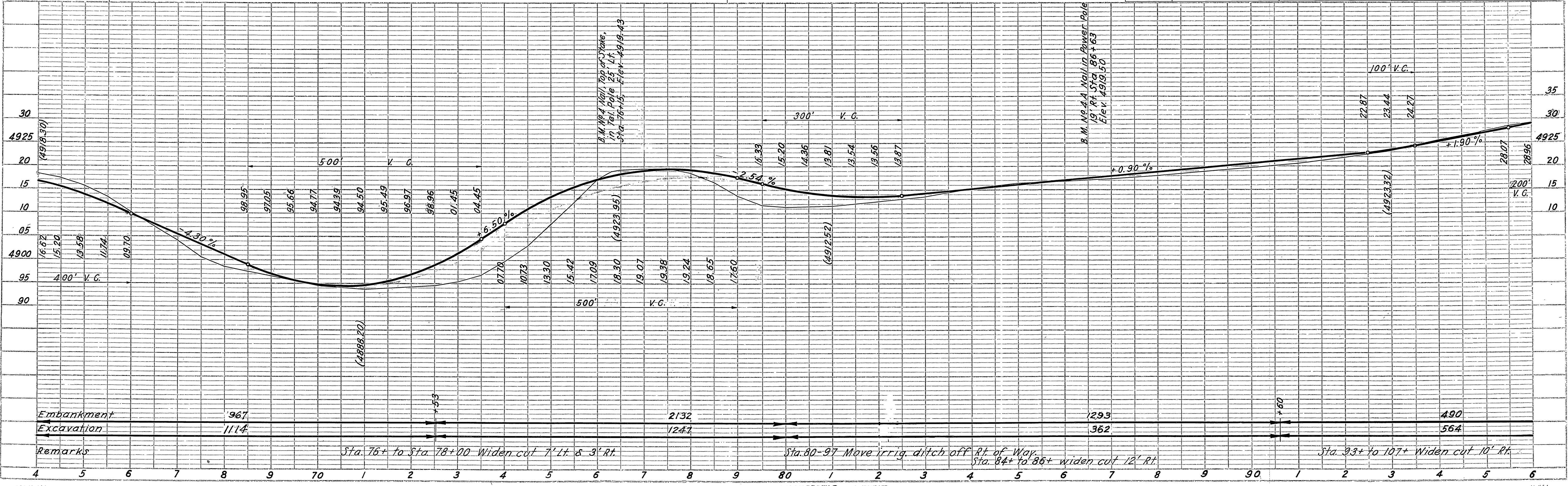
STATION	IN PLACE	REQUIRED	REMARKS	DWG. NO.
32+67		15" x 20' C.M.P.	Side Drn. Lt.	
39+10		15" x 16' "	" " "	
39+78	26" x 18' Conc. Pipe	30" x 38' "	Irrigation	
39+78		15" x 20' "	Side Drn. Lt.	
44+63		15" x 20' "	Side Drn. Rt.	
48+73		15" x 20' "	" " Lt.	
49+61	12" x 12' C.M.P. (Not Found)			
50+79		6' x 6' x 38.5' Conc. Box Culvt.		SC-600-L17
50+93		6' x 6' x 18' Conc. Box Culvt.		
51+72		15" x 20' C.M.P.	Side Drn. Lt.	
40+65		15" x 16' "	" " "	
43+60		15" x 20' "	" " "	
47+60		15" x 12' "	" " "	
53+44		15" x 20' "	" " Rt.	

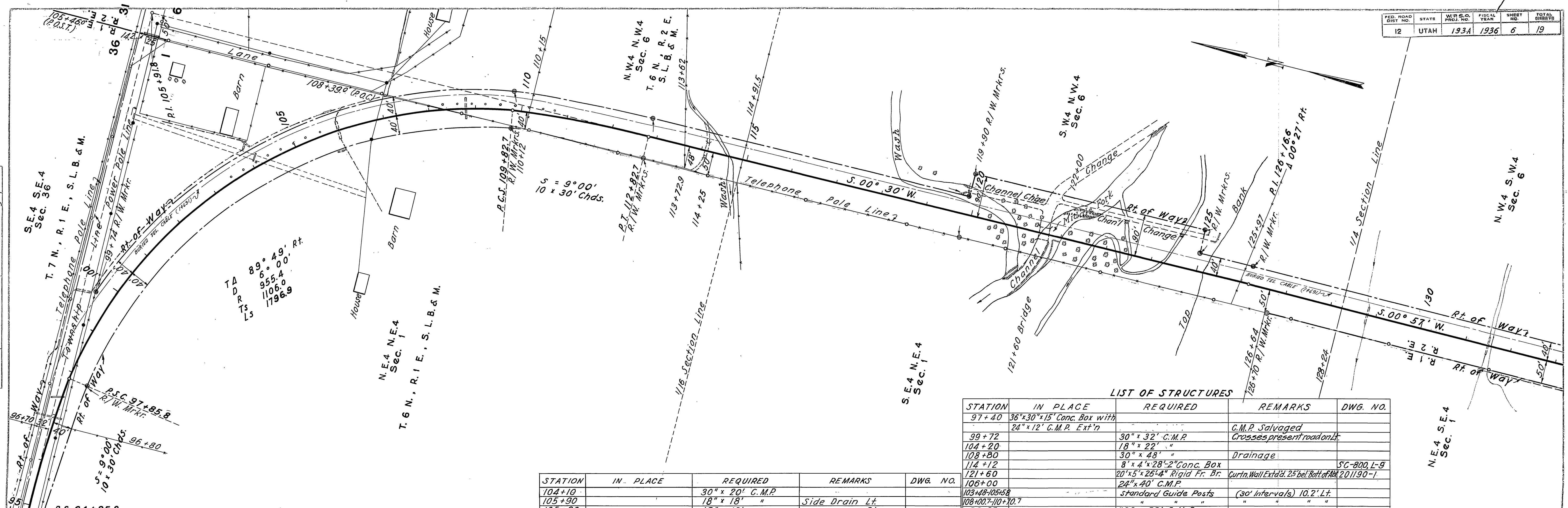




**LIST OF STRUCTURES**

STATION	IN PLACE	REQUIRED	REMARKS	DWG. NO.
68+16	10' x 5' x 18' Conc. Br.	Ext. 17.33' Lt.		E-232-6, L-243
68+16	" " "	" 3.00' Rt.		" , L-244
68+87	15" x 18" C.M.P.	15" x 18" C.M.P.	Ext. 4' Rt. & 14' Lt.	
69+65	24" x 20" "	24" x 16" "	" 6" " & 10" "	
71+60	9' x 4' x 19' Conc. Br.	Ext. 8.30' Lt.		E-232-6, L-245
71+60	" " "	" 6.00' Rt.		" , L-246
78+96	" " "	12" x 16" C.M.P.	Side Drain Rt. Salvaged	
79+80	" " "	15" x 20" "	" " Rt.	
80+01	12" x 16" C.M.P.	24" x 44" C.M.P.	Salvage & Replace	
88+60	" " "	30" x 12" "	Side Drain Lt.	





STATION	IN PLACE	REQUIRED	REMARKS	DWG. NO.
97+40	36" x 30" x 15' Conc. Box with	24" x 12" C.M.P. Ext'n	C.M.P. Salvaged	
99+72		30" x 32' C.M.P.	Crosses present road on Lt.	
104+20		18" x 22' "		
108+80		30" x 48' "	Drainage	
114+12		8' x 4' x 28'-2" Conc. Box		SC-800, L-9
121+60		20' x 5' x 26'-4" Rigid Fr. Br.	Curtin Wall Ext'd 2.5' bel. Bott. of Abut. 201190-1	
106+00		24" x 40' C.M.P.		
103+48-105+58		Standard Guide Posts	(30' Intervals) 10.2' Lt.	
108+00.7-110+70.7				
96+95		18" x 58' C.M.P.		

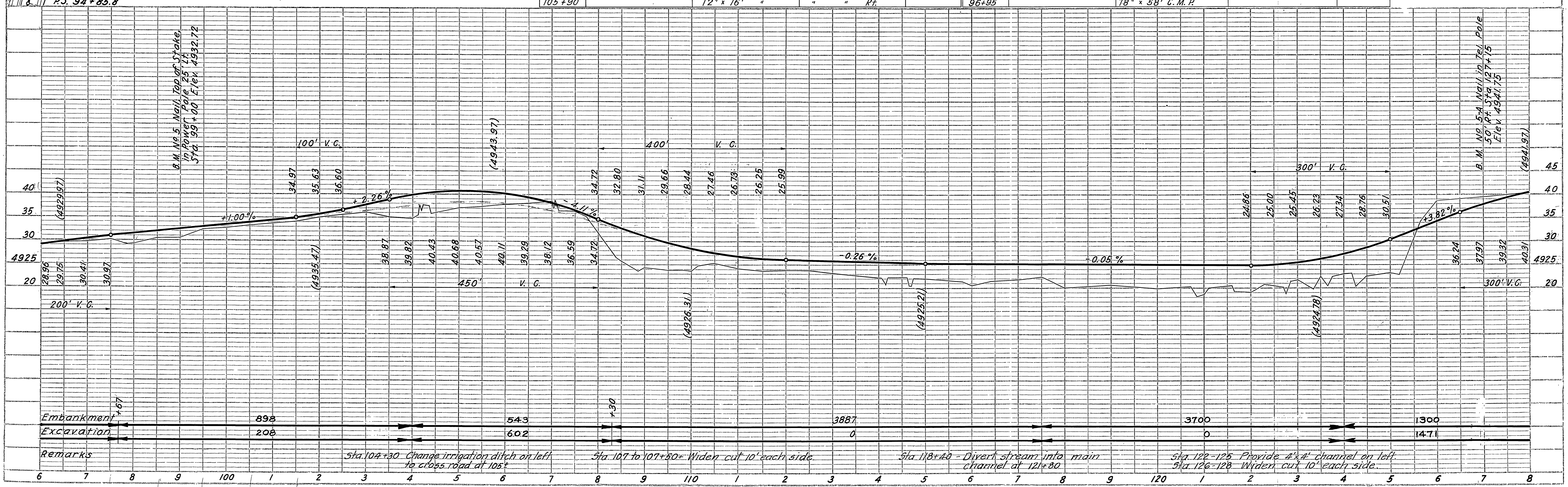
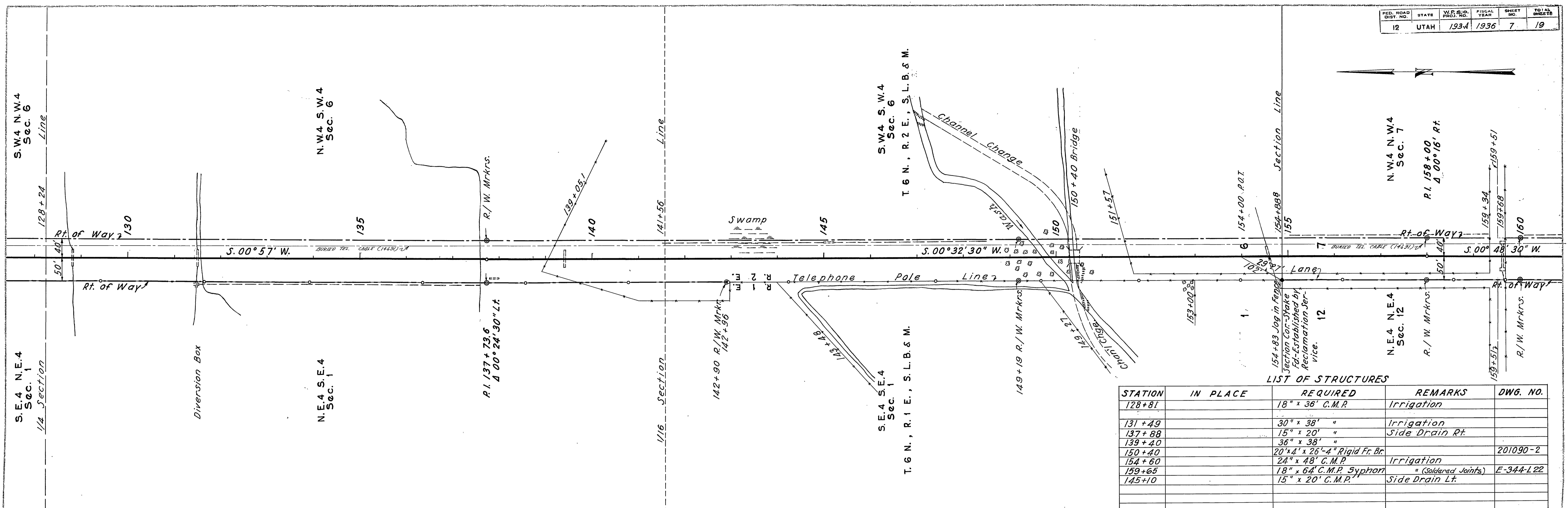
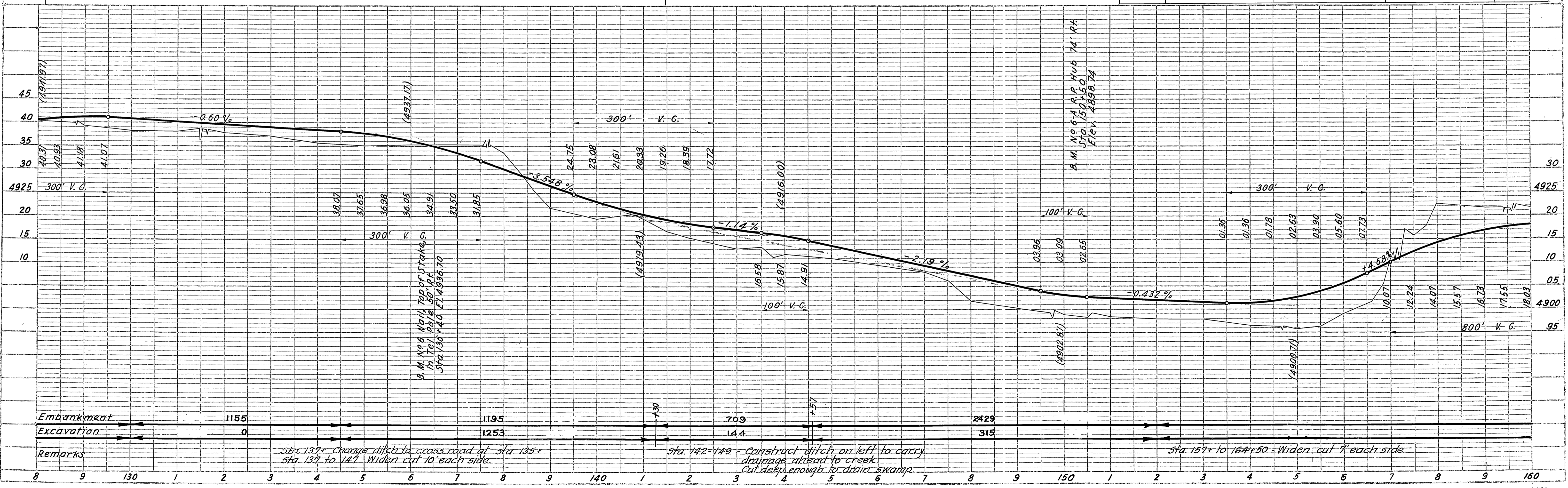


PLATE I-PLAN-PROFILE - R. P. R. BEAUFORT



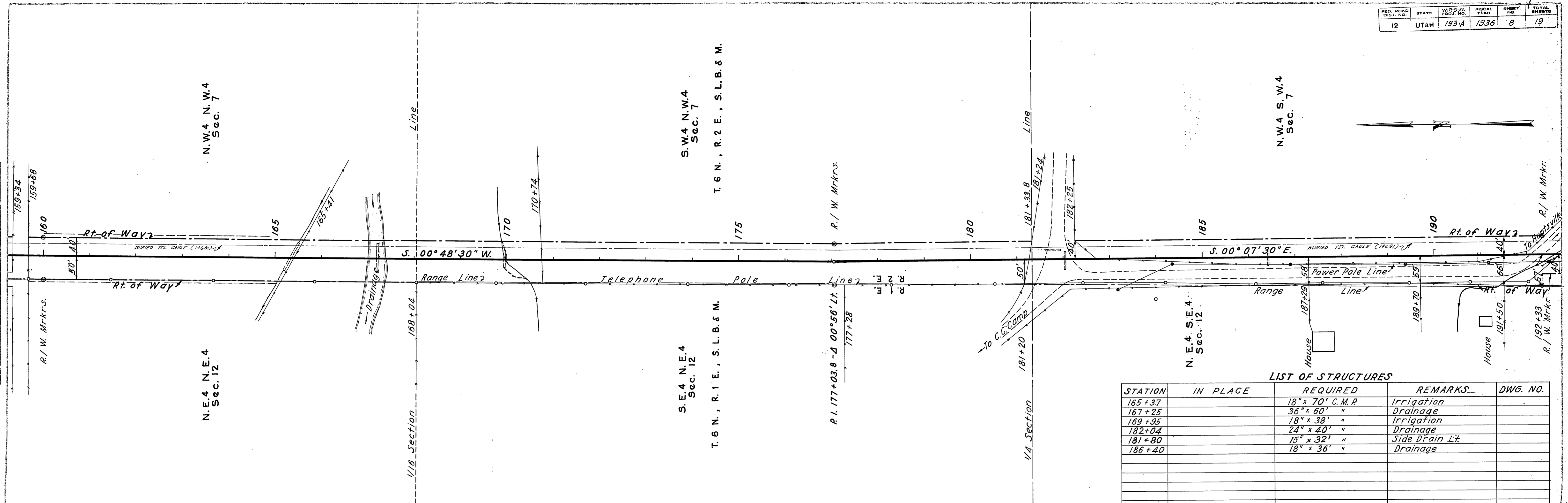
STATION	IN PLACE	REQUIRED	REMARKS	DWG. NO.
128+81		18" x 36" C.M.P.	Irrigation	
131+49		30" x 38" "	Irrigation	
137+88		15" x 20' "	Side Drain Rt.	
139+40		36" x 38' "		
150+40		20' x 4' x 26'-4" Rigid Fr. Br.		201090-2
154+60		24" x 48" C.M.P.	Irrigation	
159+65		18" x 64" C.M.P. Syphon	" (Soldered Joints)	E-344-L22
145+10		15" x 20' C.M.P.	Side Drain Lt.	



Remarks:
 

- Sta. 137+ Change ditch to cross road at sta. 135+ sta. 137 to 147 - Widen cut 10' each side.
- Sta. 142-149 - Construct ditch on left to carry drainage ahead to creek cut deep enough to drain swamp.
- Sta. 157+ to 164+50 - Widen cut 7' each side.





**LIST OF STRUCTURES**

STATION	IN PLACE	REQUIRED	REMARKS	DWG. NO.
165+37		18" x 70' C.M.P.	Irrigation	
167+25		36" x 60' "	Drainage	
169+95		18" x 38' "	Irrigation	
182+04		24" x 40' "	Drainage	
181+80		15" x 32' "	Side Drain Lt.	
186+40		18" x 36' "	Drainage	

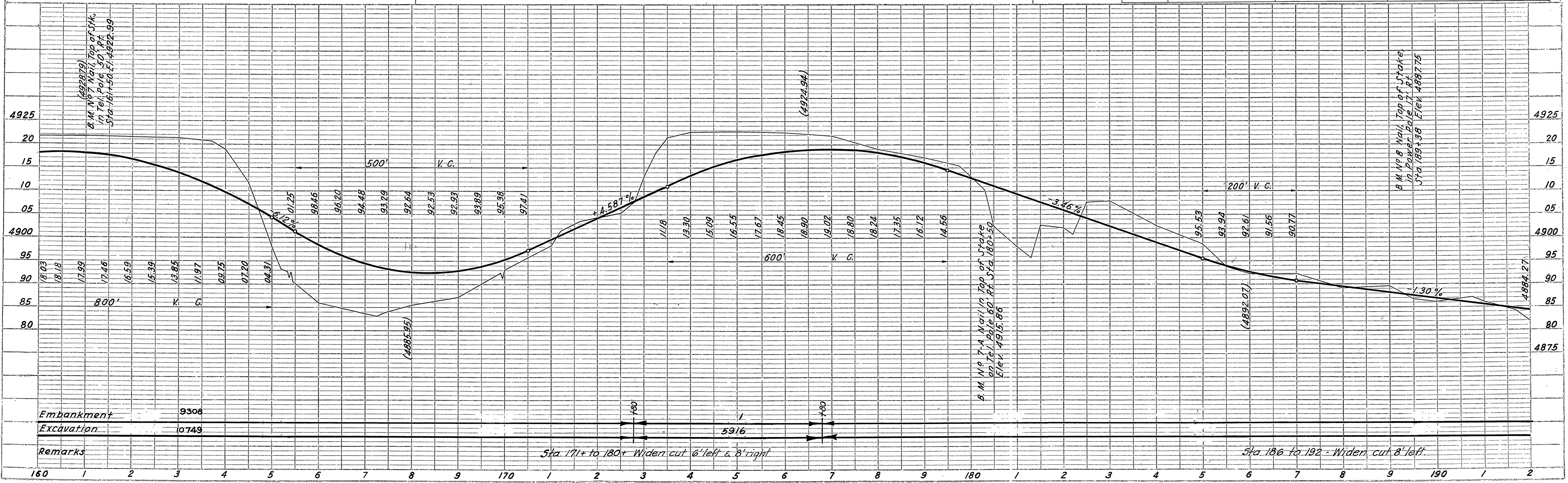
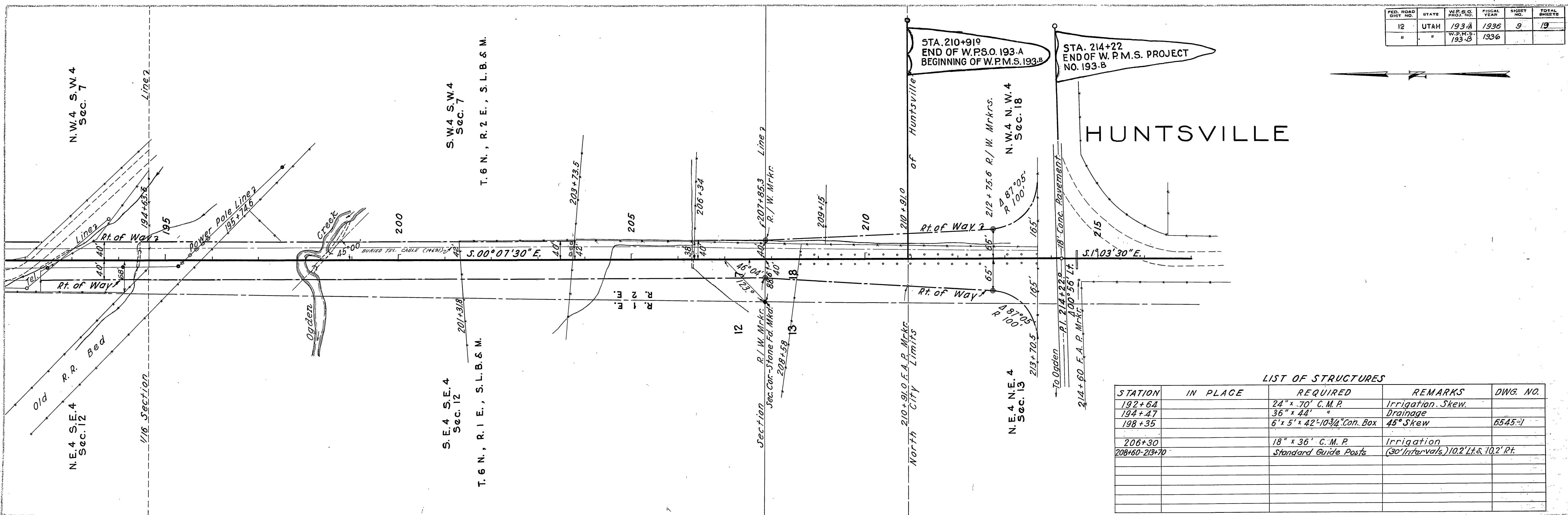


PLATE 1-PLAN-PROFILE B. P. B. STANDARD  
 ENGINEERS INC. CHICAGO, ILL. NEW YORK

FED. ROAD DIST. NO.	STATE	W.P.S.O. PROJ. NO.	FISCAL YEAR	SHEET NO.	TOTAL SHEETS
12	UTAH	193-A	1936	9	19
"	"	W.P.M.S. 193-B	1936		



**LIST OF STRUCTURES**

STATION	IN PLACE	REQUIRED	REMARKS	DWG. NO.
192+64		24" x 70' C.M.P.	Irrigation Skew.	
194+47		36" x 44" "	Drainage	
198+35		6' x 5' x 42'-10 3/4" Con. Box	45° Skew	6545-1
206+30		18" x 36' C.M.P.	Irrigation	
208+60-213+70		Standard Guide Posts	(30' Intervals) 10.2' Lt. & 10.2' Rt.	

